

09/08/99

CONTRACT NO.: DA00294 WBS ELEMENT: 2016CPT.01.25.20371.1, ETC

STATE OF NORTH CAROLINA
DIVISION OF HIGHWAYS

GATES COUNTY

LOCATION: MAP 1 SR 1319 CLAY HILL RD FROM SR 1318 TO US 158

MAP 2 SR 1321 BAZEMORE LANE FROM US 158 TO SR 1320

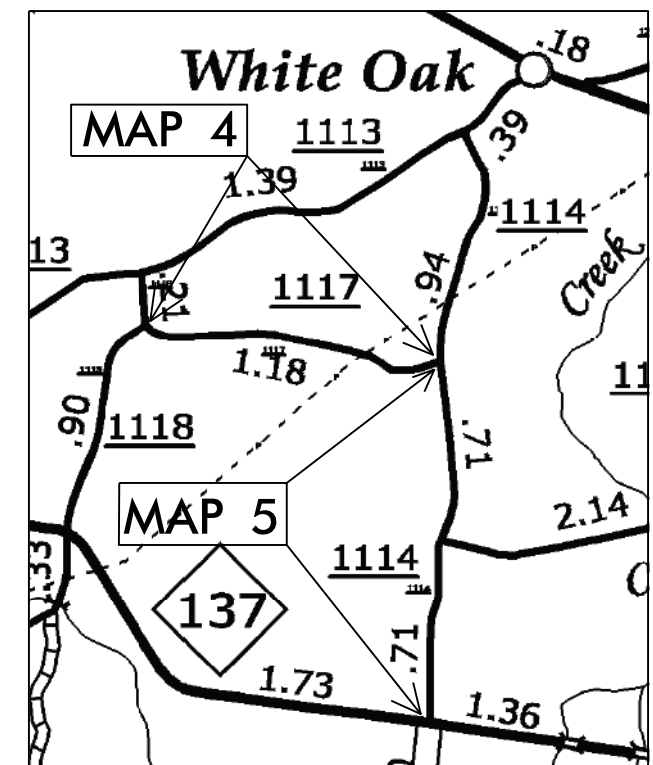
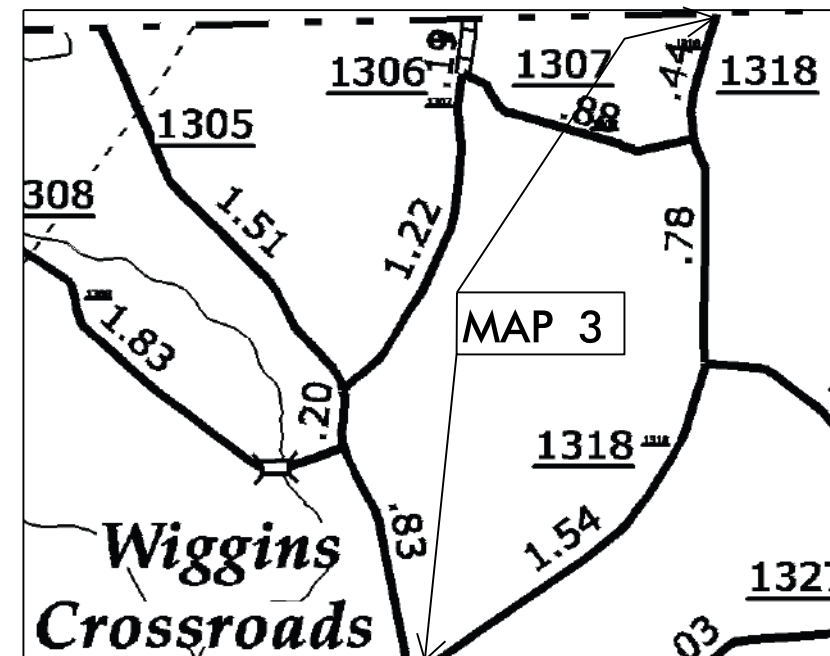
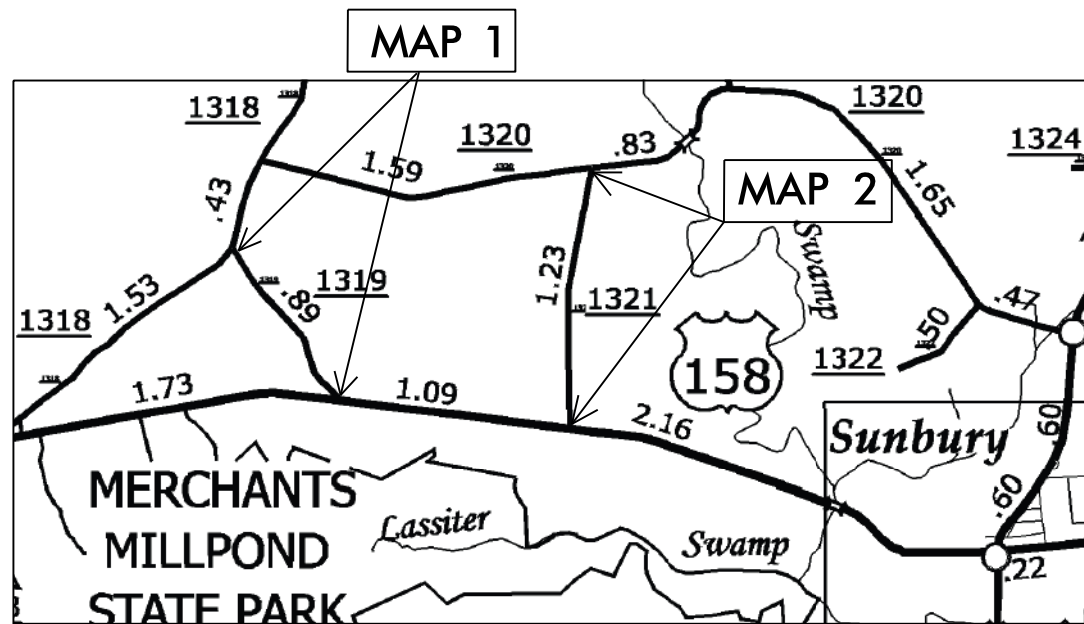
MAP 3 SR 1318 MIDDLE SWAMP RD FROM SR 1305 UNION BRANCH TO VIRGINIA STATE LINE

MAP 4 SR 1117 ASKEW RD FROM SR 1118 TO SR 1114

MAP 5 SR 1114 TURNER RD FROM SR 1117 TO NC 137

TYPE OF WORK: RESURFACING & SHOULDER RECONSTRUCTION

STATE	STATE PROJECT REFERENCE NO.	SHEET NO.	TOTAL SHEETS
N.C.	2016CPT.01.25.20371.1, ETC	1	
STATE PROJ. NO.	F.A. PROJ. NO.	DESCRIPTION	
2016CPT.01.25.20371.1		MAP 1	
2016CPT.01.25.20371.2		MAP 2	
2016CPT.01.25.20371.3		MAP 3	
2016CPT.01.25.20371.4		MAP 4	
2016CPT.01.25.20371.5		MAP 5	



NTS

PROJECT LENGTH

- LENGTH OF ROADWAY PROJECT MAP 1 = 0.90 MI.
- LENGTH OF ROADWAY PROJECT MAP 2 = 1.20 MI.
- LENGTH OF ROADWAY PROJECT MAP 3 = 2.75 MI.
- LENGTH OF ROADWAY PROJECT MAP 4 = 1.16 MI.
- LENGTH OF ROADWAY PROJECT MAP 5 = 1.42 MI.

Prepared in the Office of:
DIVISION OF HIGHWAYS

113 Airport Dr., Edenton NC, 27932

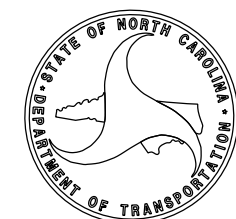
2012 STANDARD SPECIFICATIONS

LETTING DATE:

W. B. HOBBS, P.E.
DIVISION PROJECT MANAGER

C. E. SLACHTA
DIVISION PROPOSALS ENGINEER

DIVISION OF HIGHWAYS
STATE OF NORTH CAROLINA



DRAWN BY: BJT

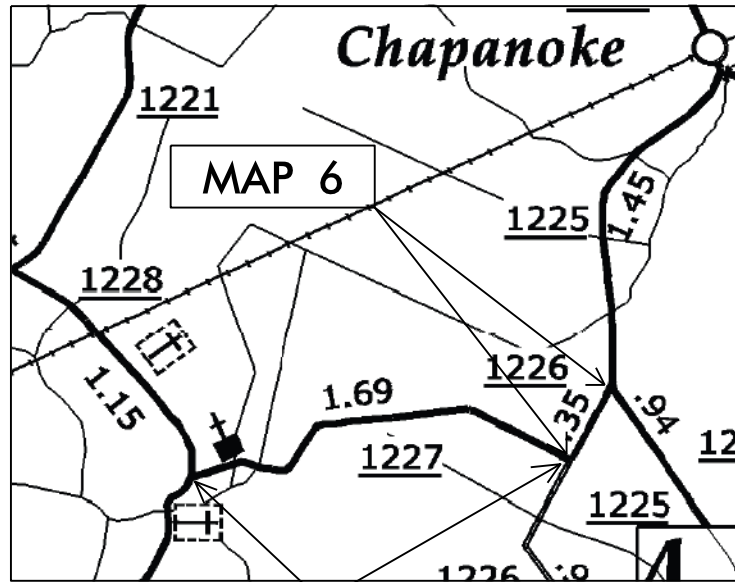
STATE	STATE PROJECT REFERENCE NO.	SHEET NO.	TOTAL SHEETS
N.C.	2016CPT.01.25.20371.1, ETC.	2	
STATE PROJ. NO.	F.A. PROJ. NO.	DESCRIPTION	
2016CPT.01.25.20721.1		MAP 6	
2016CPT.01.25.20721.2		MAP 7	
2016CPT.01.25.20721.3		MAP 8	
2016CPT.01.25.20721.4		MAP 9	
2016CPT.01.25.20721.5		MAP 10	
2016CPT.01.25.20721.6		MAP 11	

STATE OF NORTH CAROLINA
DIVISION OF HIGHWAYS

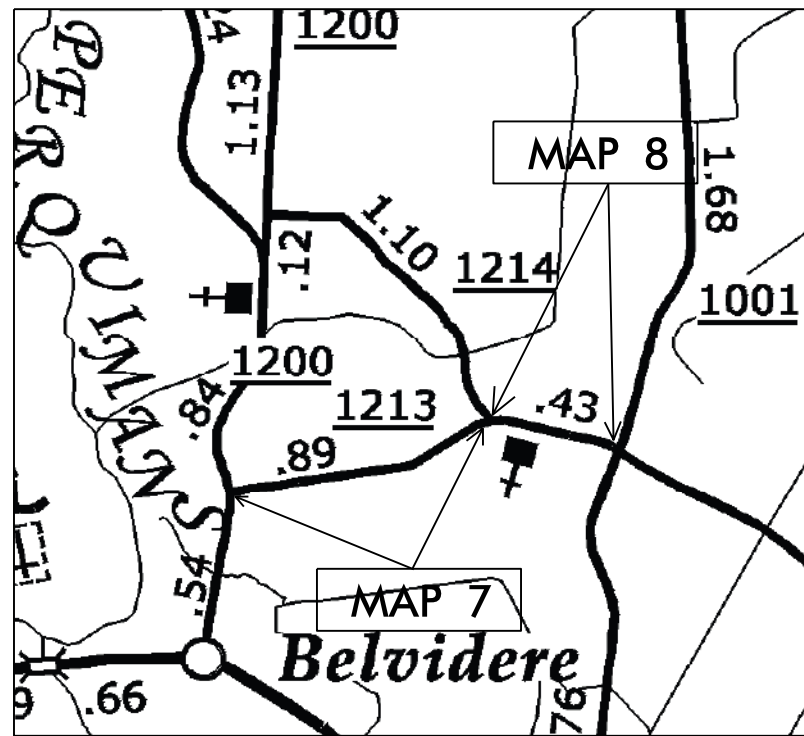
PERQUIMANS COUNTY

LOCATION: MAP 6 SR 1226 OLD HICKORY RD FROM SR 1227 TO SR 1225
 MAP 7 SR 1213 BAY BRANCH RD FROM SR 1214 TO SR 1200
 MAP 8 SR 1214 BAY BRANCH RD FROM SR 1213 TO SR 1001
 MAP 9 SR 1391 MATTHEWS ACRES RD FROM SR 1301 TO SR 1416
 MAP 10 SR 1332 FERRY RD FROM SR 1329 TO DEAD END
 MAP 11 SR 1227 HURDLETOWN RD FROM SR 1228 TO SR 1226

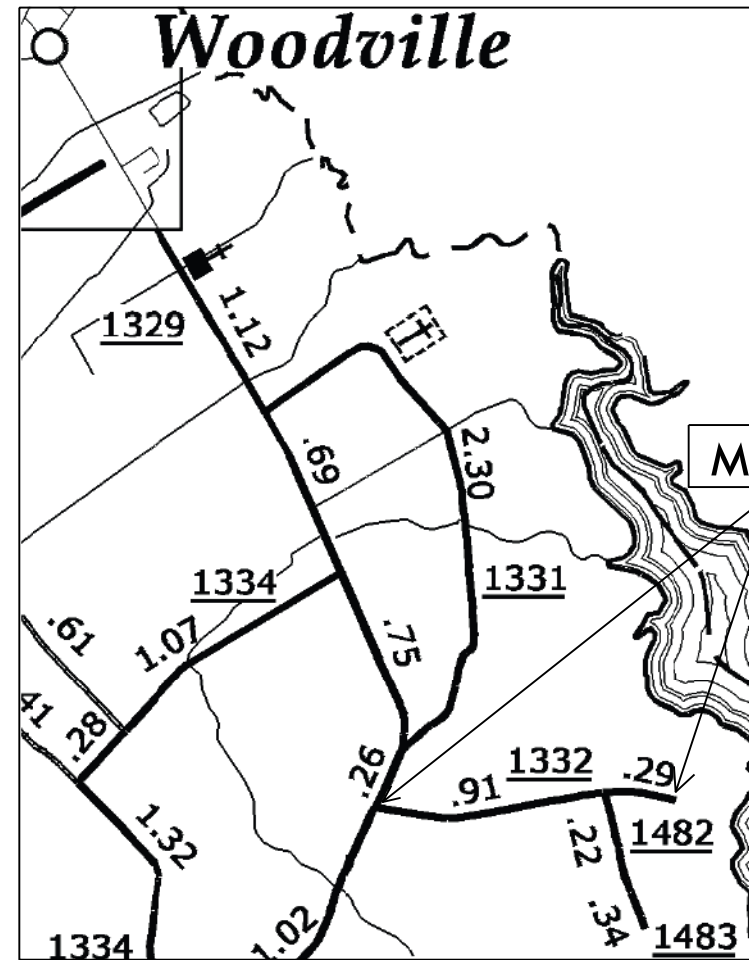
TYPE OF WORK: RESURFACING & SHOULDER RECONSTRUCTION



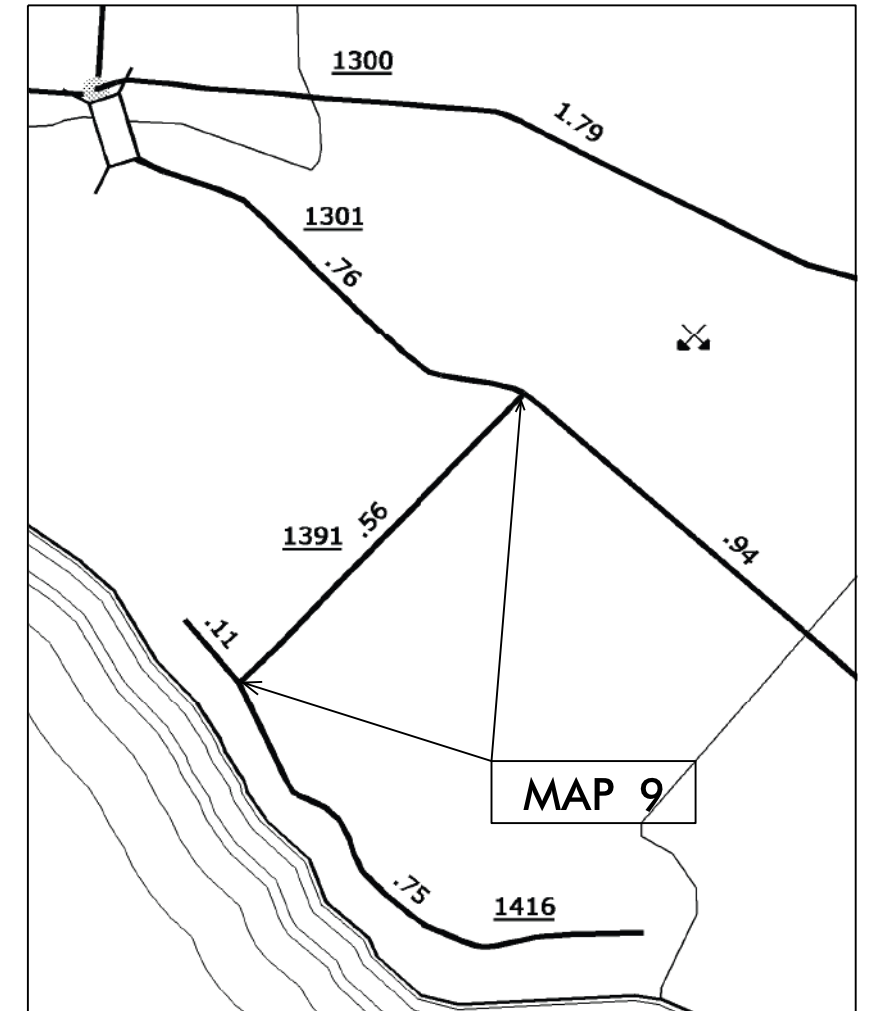
MAP 11



MAP 8



MAP 10



MAP 9

CONTRACT NO.: DA00294 WBS ELEMENT: 2016CPT.01.25.20371.1, ETC.

DRAWN BY: BJT

NTS

PROJECT LENGTH

- LENGTH OF ROADWAY PROJECT MAP 6 = 0.37 MI.
- LENGTH OF ROADWAY PROJECT MAP 7 = 0.88 MI.
- LENGTH OF ROADWAY PROJECT MAP 8 = 0.41 MI.
- LENGTH OF ROADWAY PROJECT MAP 9 = 0.56 MI.
- LENGTH OF ROADWAY PROJECT MAP 10 = 1.37 MI.
- LENGTH OF ROADWAY PROJECT MAP 11 = 1.70 MI.

Prepared in the Office of:
DIVISION OF HIGHWAYS
113 Airport Dr., Edenton NC, 27932

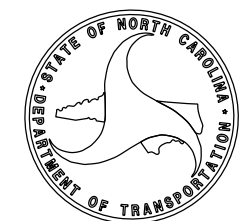
2012 STANDARD SPECIFICATIONS

LETTING DATE:

W.B. HOBBS, P.E.
DIVISION PROJECT MANAGER

C.E. SLACHTA
DIVISION PROPOSALS ENGINEER

DIVISION OF HIGHWAYS
STATE OF NORTH CAROLINA



C O N T R A C T P A V E M E N T S C H E D U L E

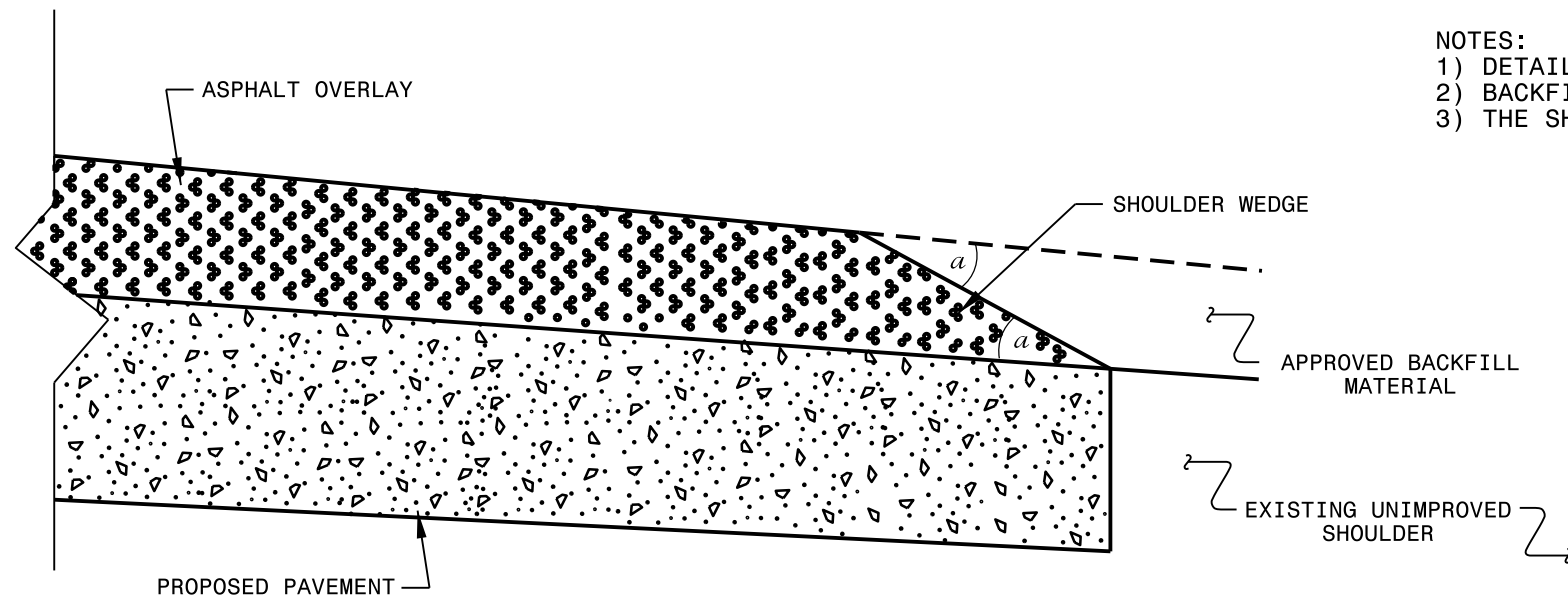
C1	PROP. APPROX. 1½" ASPHALT CONCRETE SURFACE COURSE, TYPE SF9.5A, AT AN AVERAGE RATE OF 165 LBS. PER SQ. YD.
U	EXISTING PAVEMENT.
T	EARTH MATERIAL

PROJECT NO.	SHEET NO.	TOTAL NO.
2016CPT.01.25.20371.1, ETC.	5	

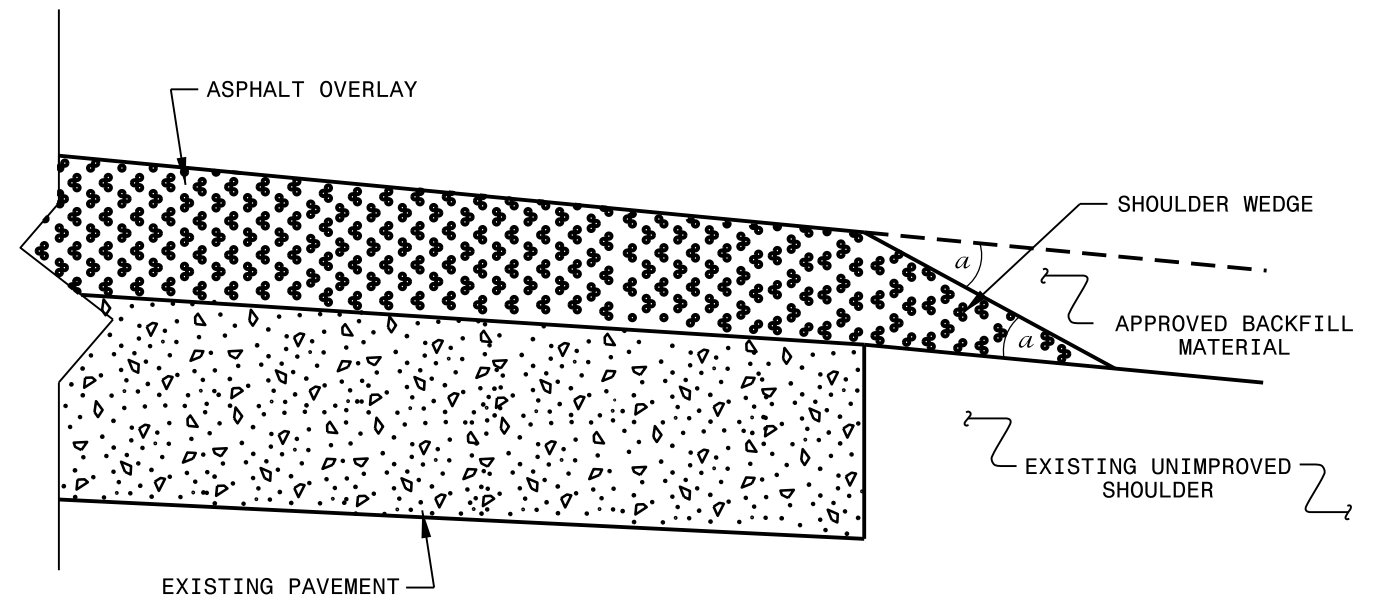
SUMMARY OF QUANTITIES

PROJECT NO	COUNTY	MAP NO	ROUTE	DESCRIPTION	TYP NO	LANES	LANE TYPE	FINAL SURFACE TESTING REQUIRED	WARM MIX ASPHALT REQUIRED	LENGTH MI	WIDTH FT	MOBILIZATION LS	BORROW CY	INCIDENTAL STONE BASE TONS	SHOULDER RECONSTRUCTION SMI	SURFACE COURSE, SF9.5A TONS	ASPHALT BINDER FOR PLANT MIX TONS	TEMPORARY SILT FENCE LF	SEED & MULCHING AC	TRAFFIC CONTROL LS
2016CPT.01.25.20371.1	Gates	1	SR 1319 CLAY HILL RD	FROM SR 1318 TO US 158	1	2	2WU	NO	NO	0.9	21	1	300	20	1.70	1,012	68		0.80	1
2016CPT.01.25.20371.2	Gates	2	SR 1321 BAZEMORE LANE	FROM US 158 TO SR 1320	1	2	2WU	NO	NO	1.2	20	*	450	20	2.40	1,286	86		1.20	*
2016CPT.01.25.20371.3	Gates	3	SR 1318 MIDDLE SWAMP RD	FROM SR 1305 UNION BRANCH TO VIRGINIA STATE LINE	1	2	2WU	NO	NO	2.75	20	*	1,000	30	5.50	2,991	200	100	2.60	*
2016CPT.01.25.20371.4	Gates	4	SR 1117 ASKEW RD	FROM SR 1118 TO SR 1114	1	2	2WU	NO	NO	1.16	21	*	450	10	2.32	1,305	87		1.12	*
2016CPT.01.25.20371.5	Gates	5	SR 1114 TURNER RD	FROM SR 1117 TO NC 137	1	2	2WU	NO	NO	1.42	22	*	550	20	2.80	1,717	115	100	1.4	*
2016CPT.01.25.20721.1	Perquimans	6	SR 1226 OLD HICKORY RD	FROM SR 1227 TO SR 1225	1	2	2WU	NO	NO	0.37	19	*	150	5	0.75	377	25		0.36	*
2016CPT.01.25.20721.2	Perquimans	7	SR 1213 BAY BRANCH RD	FROM SR 1214 TO SR 1200	1	2	2WU	NO	NO	0.88	20	*	350	10	1.76	943	63		0.85	*
2016CPT.01.25.20721.3	Perquimans	8	SR 1214 BAY BRANCH ROAD	FROM SR 1213 TO SR 1001	1	2	2WU	NO	NO	0.41	20	*	150	10	0.80	461	31		0.39	*
2016CPT.01.25.20721.4	Perquimans	9	SR 1391 MATTHEWS ACRES RD	FROM SR 1301 TO SR 1416	1	2	2WU	NO	NO	0.56	20	*	200	5	1.10	644	43		0.5	*
2016CPT.01.25.20721.5	Perquimans	10	SR 1332 FERRY RD	FROM SR 1329 TO DEAD END	1	2	2WU	NO	NO	1.37	19	*	500	10	2.60	1,417	95		1.25	*
2016CPT.01.25.20721.6	Perquimans	11	SR 1227 HURDLETOWN RD	FROM SR 1228 TO SR 1226	1	2	2WU	NO	NO	1.7	19	*	650	50	3.40	1,731	116		1.65	*
GRAND TOTAL										12.72		1	4,750	190	25.13	13,884	929	200	12.12	1

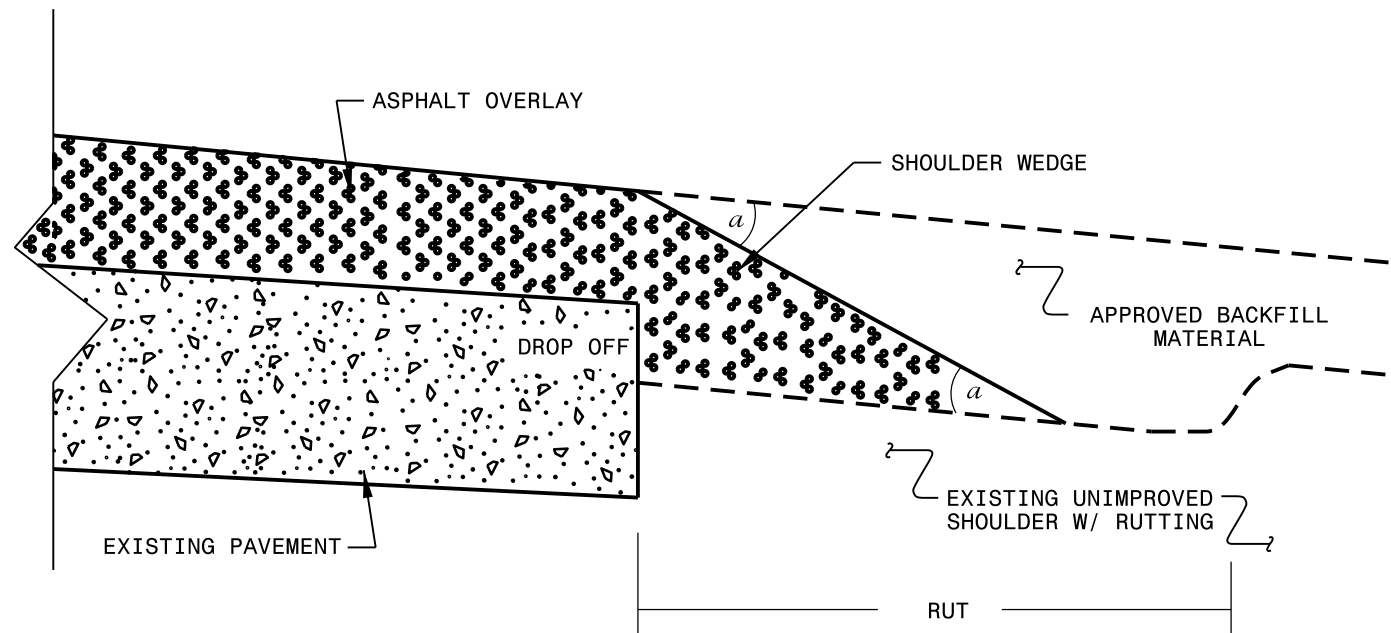
- NOTES:
 1) DETAIL DOES NOT APPLY TO OGAFB AND ULTRA-THIN BONDED WEARING COURSE.
 2) BACKFILL SHOULDER WITH APPROVED MATERIAL.
 3) THE SHOULDER WEDGE DEVICE MAY BE DISENGAGED AT PAVED DRIVEWAYS AND SIDE STREETS.



SHOULDER WEDGE DETAIL
 (Resurfacing Projects w/ Widening or
 with Existing Paved Shoulder having no dropoffs)



SHOULDER WEDGE DETAIL
 (Resurfacing Projects w/ NO Widening)



SHOULDER WEDGE DETAIL
 (Resurfacing Adjacent to
 Rutted Shoulder)

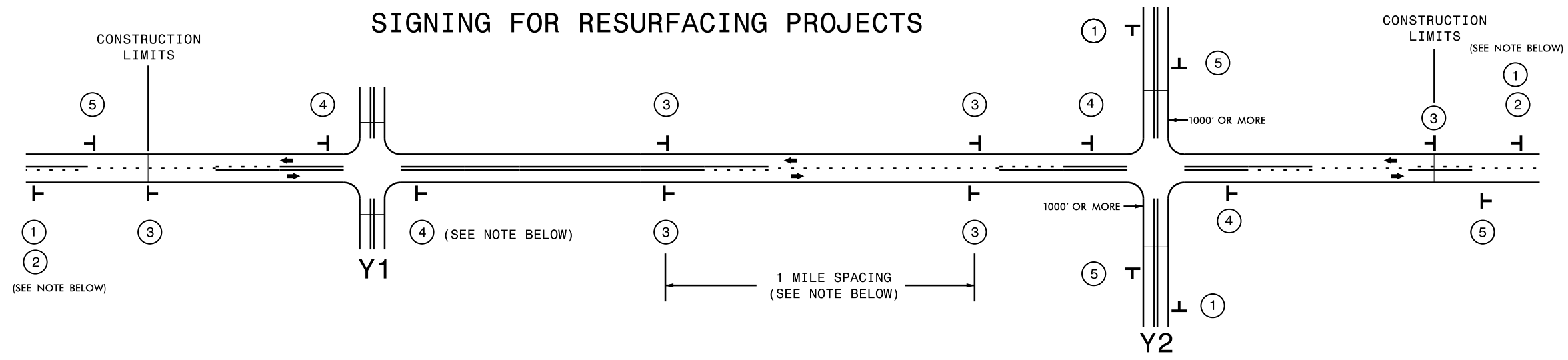
- SHOULDER WEDGE ANGLE = 30°

CONTRACT STANDARDS
 AND DEVELOPMENT UNIT
 Office 919-707-6950 FAX 919-250-4119

**SHOULDER WEDGE
 DETAILS**

ORIGINAL BY: T.SPELL DATE: 7-19-11
 MODIFIED BY: DATE: 10/16/12
 CHECKED BY: DATE:
 FILE SPEC.: s:\usr\details\stand\shoulderwedgedetail.dgn

SIGNING FOR RESURFACING PROJECTS



LEGEND	
T	STATIONARY SIGN
←	DIRECTION OF TRAFFIC FLOW

MAINLINE (-L-) SIGNING

-Y- LINE SIGNING

SIGNING NOTES AND PLACEMENT PER DIRECTION	① ②	 	<p>PLACE 1000' PRIOR TO BEGINNING OF CONSTRUCTION LIMITS. ONLY USED ON -Y- LINES IF RESURFACING LIMITS EXTEND 1000' ALONG -Y- LINE.</p> <p>#2 SIGN ONLY USED WHEN RESURFACING LIMITS ARE 2 OR MORE MILES IN LENGTH. ROUND UP TO NEXT WHOLE NUMBER. (NO FRACTIONAL OR DECIMAL NUMBERS)</p>	<p style="text-align: center;">NO REQUIRED STATIONARY SIGNING FOR THE FOLLOWING -Y- LINE CONDITIONS:</p> <ol style="list-style-type: none"> 1) LESS THAN 1000' OF RESURFACING ALONG -Y- LINE 2) SUBDIVISION ROADS 3) DEAD END ROADS <p>WHEN PAVING/CONSTRUCTION ACTIVITIES PROCEED ACROSS AN UNSIGNED -Y- LINE, ADVANCE WARNING PORTABLE SIGNS SHALL BE USED ALONG THE -Y- LINE AS SHOWN BELOW. REMOVE UPON COMPLETION OF WORK.</p> <div style="text-align: center;"> </div> <p style="text-align: center;">PLACED 500' IN ADVANCE OF FLAGGER. PLACED 250' IN ADVANCE OF FLAGGER.</p>
	③		<p>PLACE INITIALLY AT THE CONSTRUCTION LIMITS AND SPACED 1 MILE APART THEREAFTER. IF NO -Y- LINES EXIST, PLACE 2ND SET 1/2 MILE FROM THE CONSTRUCTION LIMITS AND THEN SPACE 1 MILE THEREAFTER.</p>	
	④		<p>THESE ARE FOR -Y- LINES THAT ARE "THROUGH" ROADWAYS. DEAD END AND SUBDIVISION ROADS ARE NOT "THROUGH" ROADWAYS. INSTALL 500' +/- FROM EACH -Y- LINE APPROACH AS SHOWN ABOVE. FOR MULTIPLE -Y- LINES THAT ARE SEPARATED BY 0.25 MILES OR LESS, TREAT AS A SINGLE UNIT AND INSTALL WITHIN 500' OF EACH APPROACH. A MAXIMUM OF 2 SIGN SETS PER MILE. DO NOT INSTALL WHEN -Y- LINES ARE WITHIN 0.5 MILES FROM "END ROAD WORK" SIGN.</p>	
	⑤		<p>PLACE 500' FOLLOWING THE END OF CONSTRUCTION LIMITS.</p>	

22-JAN-2016 10:24
 C:\cadd\264931\Drawings\Resurfacing\AdvWarn_2Ln.dgn
 dtatum AT D:\A0270261



**RESURFACING
 ADVANCE WARNING SIGNS
 FOR
 RURAL AND SUBURBAN
 2 LANE ROADWAYS**